

Be a NEWS 3

Hunger Hero

We need groceries to provide **over 12,000 meals** to food-insecure children and families this summer.

CAN YOU HELP?

We need the following to distribute to families this summer:

- | | |
|---------------|---------------------------------|
| Cereal | Jelly |
| Mac & Cheese | Fruit Cups |
| Spaghetti | Tuna |
| Pasta Sauce | Healthy Snack |
| Peanut Butter | (Fruit Snack, Granola Bar etc.) |

We order fresh eggs, milk, bread and fresh fruit to be added to the groceries weekly.

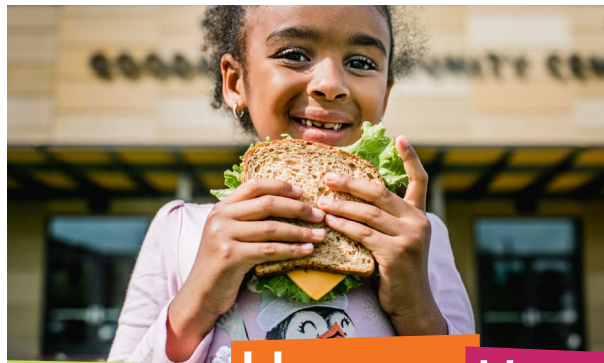
Bring your food donations to the Center between May 23 and June 21:

Monday-Friday, 6 a.m. to 9 p.m.
Saturday, 6 a.m. to 6 p.m.
Sunday, 8:30 a.m. to 6 p.m.



Goodman
Community Center

goodmancenter.org/hunger



Be a NEWS 3

Hunger Hero

We need groceries to provide **over 12,000 meals** to food-insecure children and families this summer.

CAN YOU HELP?

We need the following to distribute to families this summer:

- | | |
|---------------|---------------------------------|
| Cereal | Jelly |
| Mac & Cheese | Fruit Cups |
| Spaghetti | Tuna |
| Pasta Sauce | Healthy Snack |
| Peanut Butter | (Fruit Snack, Granola Bar etc.) |

We order fresh eggs, milk, bread and fresh fruit to be added to the groceries weekly.

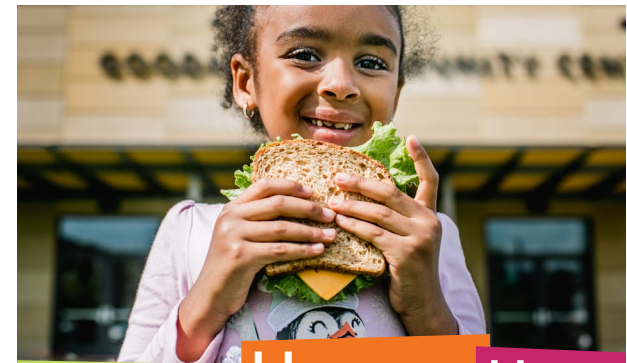
Bring your food donations to the Center between May 23 and June 21:

Monday-Friday, 6 a.m. to 9 p.m.
Saturday, 6 a.m. to 6 p.m.
Sunday, 8:30 a.m. to 6 p.m.



Goodman
Community Center

goodmancenter.org/hunger



Be a NEWS 3

Hunger Hero

We need groceries to provide **over 12,000 meals** to food-insecure children and families this summer.

CAN YOU HELP?

We need the following to distribute to families this summer:

- | | |
|---------------|---------------------------------|
| Cereal | Jelly |
| Mac & Cheese | Fruit Cups |
| Spaghetti | Tuna |
| Pasta Sauce | Healthy Snack |
| Peanut Butter | (Fruit Snack, Granola Bar etc.) |

We order fresh eggs, milk, bread and fresh fruit to be added to the groceries weekly.

Bring your food donations to the Center between May 23 and June 21:

Monday-Friday, 6 a.m. to 9 p.m.
Saturday, 6 a.m. to 6 p.m.
Sunday, 8:30 a.m. to 6 p.m.



Goodman
Community Center

goodmancenter.org/hunger

WANT US TO DO THE SHOPPING?

No problem — we are able to buy in bulk at reduced prices. Your financial support strengthens our efforts, and gives you an easy way to get involved! Give today at:

goodmancenter.org/donate

Goodman Community Center also welcomes checks and in-person donations. Please note if your gift is part of a food drive. Donations that exceed the need for summer meals will support the Fritz Food Pantry and food programs at the Center.



Partners:



Sponsors:



Thank you for any way you can help!

Questions? Jon Lica, Corporate Giving Manager at jon@goodmancenter.org or 608.204.8033.

GOODMAN COMMUNITY CENTER
IRONWORKS: 149 Waubesa Street | Madison
goodmancenter.org/hunger

WANT US TO DO THE SHOPPING?

No problem — we are able to buy in bulk at reduced prices. Your financial support strengthens our efforts, and gives you an easy way to get involved! Give today at:

goodmancenter.org/donate

Goodman Community Center also welcomes checks and in-person donations. Please note if your gift is part of a food drive. Donations that exceed the need for summer meals will support the Fritz Food Pantry and food programs at the Center.



Partners:



Sponsors:



Thank you for any way you can help!

Questions? Jon Lica, Corporate Giving Manager at jon@goodmancenter.org or 608.204.8033.

GOODMAN COMMUNITY CENTER
IRONWORKS: 149 Waubesa Street | Madison
goodmancenter.org/hunger

WANT US TO DO THE SHOPPING?

No problem — we are able to buy in bulk at reduced prices. Your financial support strengthens our efforts, and gives you an easy way to get involved! Give today at:

goodmancenter.org/donate

Goodman Community Center also welcomes checks and in-person donations. Please note if your gift is part of a food drive. Donations that exceed the need for summer meals will support the Fritz Food Pantry and food programs at the Center.



Partners:



Sponsors:



Thank you for any way you can help!

Questions? Jon Lica, Corporate Giving Manager at jon@goodmancenter.org or 608.204.8033.

GOODMAN COMMUNITY CENTER
IRONWORKS: 149 Waubesa Street | Madison
goodmancenter.org/hunger